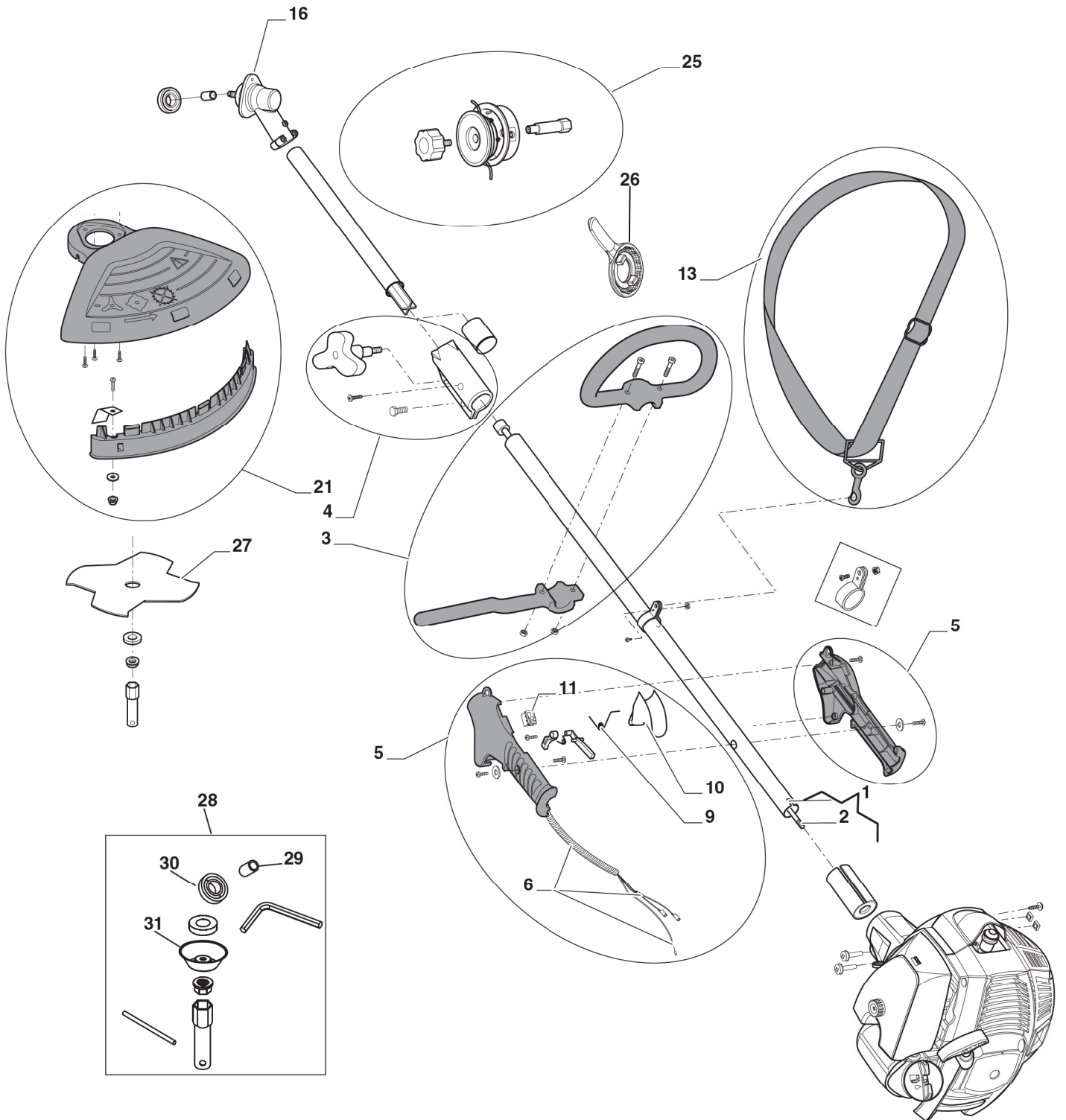


| POS. | CODE | Q.TY | DESCRIZIONE | DESCRIPTION | DESCRIPTION | BESCHREIBUNG | REMARKS |
|------|-------------|------|-----------------------------------|-------------------------------|-------------------------------|-----------------------------|---------|
| 1 | 23051000/0 | 1 | CANDELA | SPARK PLUG | BOUGIE | ZÜNDKERZE | |
| 5 | 123878049/0 | 1 | VITE | SCREW | VIS | SCHRAUBE | |
| 6 | 123878050/0 | 1 | VITE | SCREW | VIS | SCHRAUBE | |
| 7 | 183740005/0 | 1 | SILENZIATORE | MUFFLER | SILENCIEUX | SCHALLDÄMPFER | |
| 8 | 123280025/0 | 1 | GUARNIZIONE SILENZIA- TORE | GASKET | JOINT SILENCIEUX | DICHTUNG SCHALLDÄM- PFER | |
| 10 | 183070004/0 | 1 | ASS. CILINDRO - PISTO- NE | CYLINDER - PISTON ASS'Y | ENS.CYLINDRE-PISTON | SET ZYLINDER-KOLBEN | |
| 13 | 123280026/0 | 1 | GUARNIZIONE CILINDRO | CYLINDER GASKET | JOINT CYLINDRE | ZYLINDERDICHTUNG | |
| 14 | 123204005/0 | 2 | FASCIA ELASTICA | PISTON RING | COLLIER ÉLASTIQUE | KOLBENRING | |
| 15 | 183590004/0 | 1 | ASS. PISTONE | PISTON ASS'Y | ENS.PISTON | SET KOLBEN | |
| 19 | 123072001/0 | 1 | ASTUCCIO A RULLI | NEEDLE BEARING | ROUL. À AIGUILLES | WALZENROHR | |
| 20 | 123072000/0 | 1 | LINGUETTA VOLANO | FLYWHEEL KEY | CLAVETTE VOLANT | LASCHE SCHWUNGRAD | |
| 21 | 123020019/0 | 1 | LINGUETTA VOLANO | FLYWHEEL KEY | LANGUETTE VOLANT | LASCHE SCHWUNGRAD | |
| 22 | 123044007/0 | 1 | BOBINA ELETTRONICA | ELECTR. COIL | BOBINE ÉLECTRONIQUE | ELEKTRONIKSPULE | |
| 23 | 123878051/0 | 1 | VITE | SCREW | VIS | SCHRAUBE | |
| 24 | 123065033/0 | 1 | CAVO BOBINA | SPARK PLUG CABLE | CÂBLE BOUGIE | SPULENDRAHT | |
| 25 | 183037001/0 | 1 | ASS. AVVIATORE GIALLO | STARTER ASSY YELLOW | DÉMARREUR JAUNE | SET STARTER GELB | |
| - | 183037002/0 | 1 | ASS. AVVIATORE ROSSO | STARTER ASSY RED | DÉMARREUR ROUGE | SET STARTER ROT | |
| 26 | 123082001/0 | 1 | COPPA AVVIAMENTO | STARTER CUP | COUPE DÉMARREUR | STARTERGEHÄUSE | |
| 27 | 123593505/0 | 1 | POMELLO | KNOB | BOUTON | KNAUF | |
| 28 | 183090003/0 | 1 | COPRIFILTRO, GIALLO | FILTER COVER, YELLOW | COUVRE-FILTRE, JAUNE | FILTERABD. GELB | |
| - | 183090004/0 | 1 | COPRIFILTRO, ROSSO | FILTER COVER, RED | COUVRE-FILTRE, ROUGE | FILTERABD. ROT | |
| 29 | 123220008/0 | 1 | FILTRO ARIA | AIR FILTER | FILTRE À AIR | LUFTFILTER | |
| 30 | 123878052/0 | 1 | VITE | SCREW | VIS | SCHRAUBE | |
| 31 | 383781001/0 | 1 | SUPP. FILTRO ARIA | AIR FILTER HOLDER | SUPP. FILTRE À AIR | HALTER LUFTFILTER | |
| 32 | 123315077/0 | 1 | LEVA ARIA | CHOKER LEVER | LEVIER AIR | CHOKERHEBEL | |
| 33 | 123054021/0 | 1 | CARBURATORE | CARBURETTOR | CARBURATEUR | VERGASER | |
| 34 | 383073501/0 | 1 | ASS. COLLETTOR ASPIRA- RAZIONE | INTAKE MANIFOLD ASSY | COLLECTEUR ASPIRA- TION | KOLLEKTOR ANSAUGUNG | |
| 35 | 183303511/0 | 1 | ASS. GUARNIZIONI | GASKET ASS'Y | GASKET ASS'Y | SET DICHTUNGEN | |
| 40 | 119035154/0 | 1 | ANELLO DI TENUTA | SEAL RING | ANNEAU DE TENUE | DICHTRING | |
| 41 | 183275302/0 | 1 | SHORT BLOCK MOTORE | ENGINE SHORT BLOCK | SHORT BLOCK MOTEUR | SHORT BLOCK MOTOR | |
| 43 | 123280027/0 | 1 | GUARNIZIONE CARTER | CRANKCASE GASKET | GARNITURE CARTER | GEHÄUSEDICHTUNG | |
| 45 | 112020001/0 | 1 | ANELLO DI TENUTA | SEAL RING | ANNEAU DE TENUE | DICHTRING | |
| 46 | 183880004/0 | 1 | ASS. VOLANO C/MASSE | FLYWHEEL ASS.Y | ENS. VOLANT | SCHWUNGRAD MAGNET | |
| 47 | 183733004/0 | 1 | ASS. SERBATOIO MIX. | KIT FUEL TANK | ENS.RÉSERVOIR MÉ- LANGE | SET TREIBSTOFFTANK | |
| 48 | 123790016/0 | 1 | ASS. TAPPO MISCELA | FUEL CAP ASSY | BOUHCON MÉLANGE | SET DECKEL TREIBSTOFF | |
| 49 | 123120004/0 | 1 | DADO | NUT | ECROU | MUTTER | |
| 50 | 383240001/0 | 1 | ASS. GOMMINO PASSA- TUBI | GROMMET ASSY | ENS.RONDELLE CAOU- TCHOU | SET GUMMIRINGE | |
| 51 | 183215003/0 | 1 | ASS. FRIZIONE | CLUTCH ASS.Y | FRICTION | SET KUPPLUNG | |
| 52 | 183520001/0 | 1 | PESCANTE MISCELA | INTAKE FILTER | FILTRE D'ASPIRATION | TAUCHSONDE | |
| 54 | 383785001/0 | 1 | ASS.SUPPORTO TRASM., GIALLO | SUPPORT TRASM.ASSY, YELLOW | ENS.SUPPORT TRANSM., JAUNE | GETRIEBEPLATTFORM, GELB | |
| - | 383785002/0 | 1 | ASS.SUPPORTO TRASM., ROSSO | SUPPORT TRASM.ASSY, RED | ENS.SUPPORT TRANSM., ROUGE | GETRIEBEPLATTFORM, ROT | |
| 59 | 6980624 | 1 | VITE | SCREW | VIS | SCHRAUBE | |
| 60 | 123275020/0 | 1 | GOMMINO | GROMMET | CAOUTCHOU | GUMMI | |



| POS. | CODE | Q.TY | DESCRIZIONE | DESCRIPTION | DESCRIPTION | BESCHREIBUNG | REMARKS |
|------|-------------|------|-------------------------|-------------------------|-----------------------------|---------------------|---------|
| 1 | 383869063/0 | 1 | ASS.TUBO TRASMISSIONE | TRANSMISSION PIPE ASS.Y | ENS.TUBE TRANSM. | SCHAFTGRUPPE | |
| 2 | 123020021/0 | 1 | ASS.ALBERO TRASMISSIONE | TRANSM.SHAFT ASS.Y | ENS.ARBRE TRANSM. | MOTORWELLENEINHEIT | |
| 3 | 383300018/0 | 1 | IMPUGNATURA ANTERIORE | FRONT HANDLE | POIGNÉE AVANT | HANDGRIFF VORNE | |
| 5 | 383300019/0 | 1 | ASS. IMPUGNATURA | HANDLE ASS.Y | ENS.POIGNÉE | SET HANDGRIFF | |
| 6 | 183065018/0 | 1 | ASS. CAVI + GUAINA | CABLES ASS.Y + SHEATH | CÂBLE AVEC GAINE | KABEL MIT MANTEL | |
| 9 | 123430580/0 | 1 | MOLLA LEVA ACCELERATORE | SPRING | RESSORT | FEDER GASHEBEL | |
| 10 | 123315049/0 | 1 | LEVA ACCELERATORE | THROTTLE LEVER | LEVIER ACCÉLÉRATEUR | GASHEBEL | |
| 11 | 6980206 | 1 | INTERRUTTORE STOP | STOP SWITCH | INTERRUPTEUR D'ARRÊT | STOP-SCHALTER | |
| 12 | 383780001/0 | 1 | ASS. SUPPORTO BRETTELLA | HARNESS SUPPORT ASS.Y | ENS.SUPPORT HARNAIS | GURTZEUGHALTER | |
| 13 | 123046004/0 | 1 | BRETELLA | HARNESS | HARNAIS | GURTZEUG | |
| 16 | 383820505/0 | 1 | ASS.TESTINA INGRANAGGI | GEAR CASE ASSY | ENS. BOÎTE ENGREN. | SET ZAHNRADGETRIEBE | |
| 21 | 383465005/0 | 1 | ASS. PARASPRUZZI | SAFETY COVER ASS.Y | ENS. CAPOT ANTI-PROJECTIONS | SET SPRITZSCHUTZ | |
| 25 | 383820504/0 | 1 | ASS. TESTINA A FILI | CUTTING LINE ASSY | ENS. TÊTE FILS | SET SCHNEIDEKOPF | |
| 26 | 123070009/0 | 1 | CHIAVE TESTINA | NYLON HEAD KEY | CLEF | SCHLUSSEL | |
| 27 | 123155006/0 | 1 | DISCO 4 PUNTE | 4 TEETH DISCK | LAME À 4 DENTS | SCHEIBE 4 ZÄHNE | |
| 28 | 383303512/0 | 1 | BUSTA DOTAZIONI | PARTS BAG | DOTATION | SATZ | |
| 29 | 6980307 | 1 | COLLARE | COLLAR | COLLIER | STELLRING | |
| 30 | 6980308 | 1 | GHIERA SUPERIORE | UPPER RING NUT | BAGUE SUPÉRIEURE | OBERER RINGBOLZEN | |
| 31 | 6980312 | 1 | COPPA FISSA | STABILIZER | STABILISATEUR | STABILISATOR | |