

Genuine Spare Parts

www.stiga.com

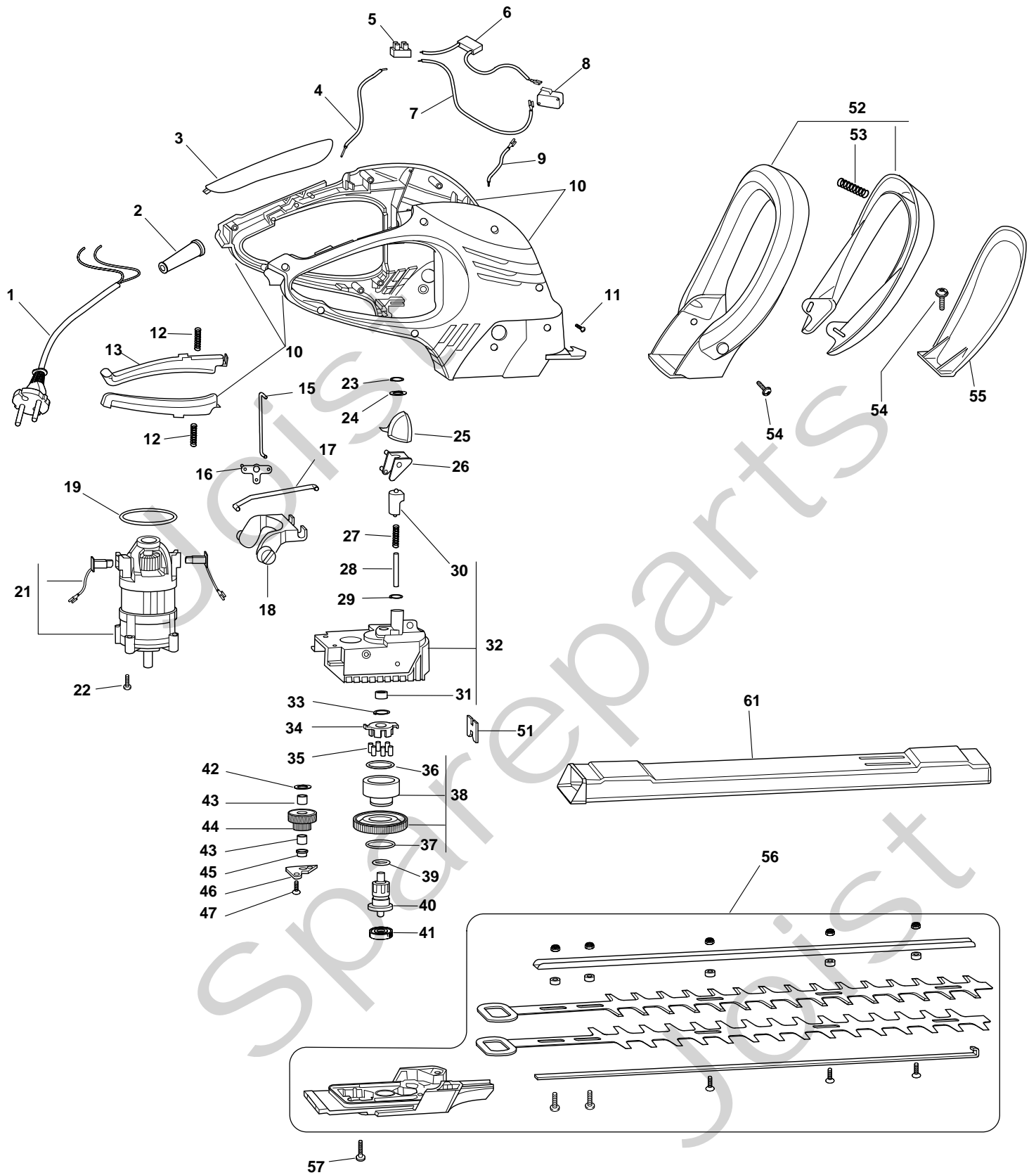
SH 60 PRO Model Year 2011

- Use GLOBAL GARDEN PRODUCT Genuine Spare Parts specified in the parts list for repair and/or replacement.
- The contents described in the parts list may change due to improvement.
- The drawings of the spare parts are only indicative and might not represent the part in question exactly.
- The indications "right" - "left" - "front" - "rear" refer to the position of the operator when using the machine.
- When placing orders of parts for repair and/or replacement, make sure that the illustrated parts list is the one applying to the machine's year of manufacture, as shown on the identification plate attached to the machine.

COPYRIGHT by GLOBAL GARDEN PRODUCTS

All rights reserved. No part of this material may be reproduced or transmitted, in any form or by any means, electronic or mechanical, including photocopying, recording or by any information storage and retrieval system, without permission in writing from GLOBAL GARDEN PRODUCTS.

STIGA®





SH 60 PRO

Pos. Fig.	Antal Quantity	Art No Part No	Benämning	Description	Anmärkning Notes
1	1	1911-1488-01	Anslutningskabel	Power Cord Assy	
2	1	1911-1066-01	Kabelskydd	Cord Protector	
3	1	1911-1508-01	Lock	Handle	
4	1	1911-1526-01	Kabel	Cable	
5	1	1911-1104-01	Kopplingsbit	Cable	
6	1	1911-1525-01	Kondensator	Capacitor	
7	1	1911-1523-01	Kabel	Cable	
8	1	1911-1524-01	Brytare	Switch	
9	1	1911-1619-01	Kabel	Cable	
10	1	1911-1598-01	Handtag	Handle Assy Yellow	
10	1	1911-1598-02	Handtag	Handle Assy Red	
11	11	1911-1105-01	Skruv	Screw	
12	2	1911-1083-01	Fjäder	Spring	
13	1	1911-1511-01	Kabe kanal	Switch Lever	
15	1	1911-1538-01	Länk	Rod	
16	1	1911-1516-01	Vridarm	Lever	
17	1	1911-1537-01	Länk	Rod	
18	1	1911-1514-01	Brytarelement	Gearshift	
19	1	1911-1520-01	O-ring	O Ring	
21	1	1911-1616-01	Elmotor	Motor	
22	11	1911-1105-01	Skruv	Screw	
23	1	1911-1567-01	Bricka	Washer	
24	1	1911-1529-01	Bricka	Washer	
25	1	1911-1518-01	Vipparm	Switch	
26	1	1911-1515-01	Insats	Gearshift	
27	1	1911-1530-01	Fjäder	Spring	
28	1	1911-1539-01	Stift	Pin	
29	1	1911-1528-01	Bricka	Washer	
30	1	1911-1621-01	Lock	Cap	
31	1	1911-1546-01	Kompass	Bush	
32	1	1911-1564-01	Växelhus kpl	Transmission Unit	
33	1	1911-1549-01	Låsring	Snap Ring	
34	1	1911-1555-01	Stöd	Shock Absorber	
35	6	1911-1531-01	Stift	Needle	
36	1	1911-1521-01	O-ring	O Ring	
37	1	1911-1489-01	Låsring	Snap Ring	
38	1	1911-1543-01	Överbelastningsskydd	Sprocket	
39	1	1911-1522-01	O-ring	O Ring	
40	1	1911-1618-01	Kedjehjul	Pinion	
41	1	1911-1554-01	Kullager	Bearing	
42	1	1911-1550-01	Bricka	Washer	
43	2	1911-1548-01	Kompass	Bush	
44	1	1911-1565-01	Drev	Sprocket	
45	1	1911-1557-01	Distans	Spacer	
46	1	1911-1556-01	Plåt	Plate	
47	2	1911-1552-01	Skruv	Screw	
51	1	1911-1532-01	Glidblock	Shoe	
52	1	1911-1594-01	Handtag	Handle Ass.Y	
53	2	1911-1551-01	Fjäder	Spring	
54	4	1911-1534-01	Skruv	Screw	
55	1	1911-1517-01	Handskydd	Hand Guard	
56	1	1911-1615-01	Kniv	Blades	
57	4	1911-1533-01	Skruv	Screw	
61	1	1911-1519-01	Knivskydd	Blade Guard	