

Genuine Spare Parts

www.stiga.com

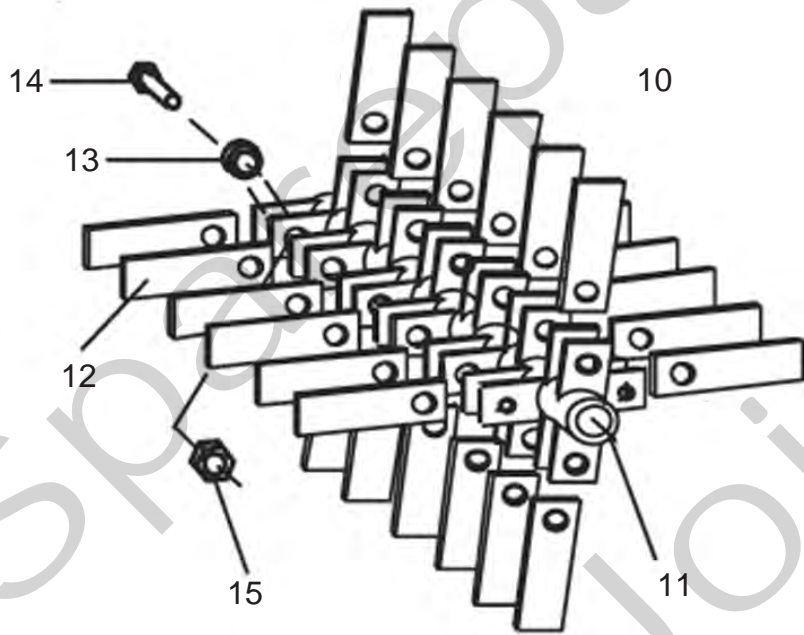
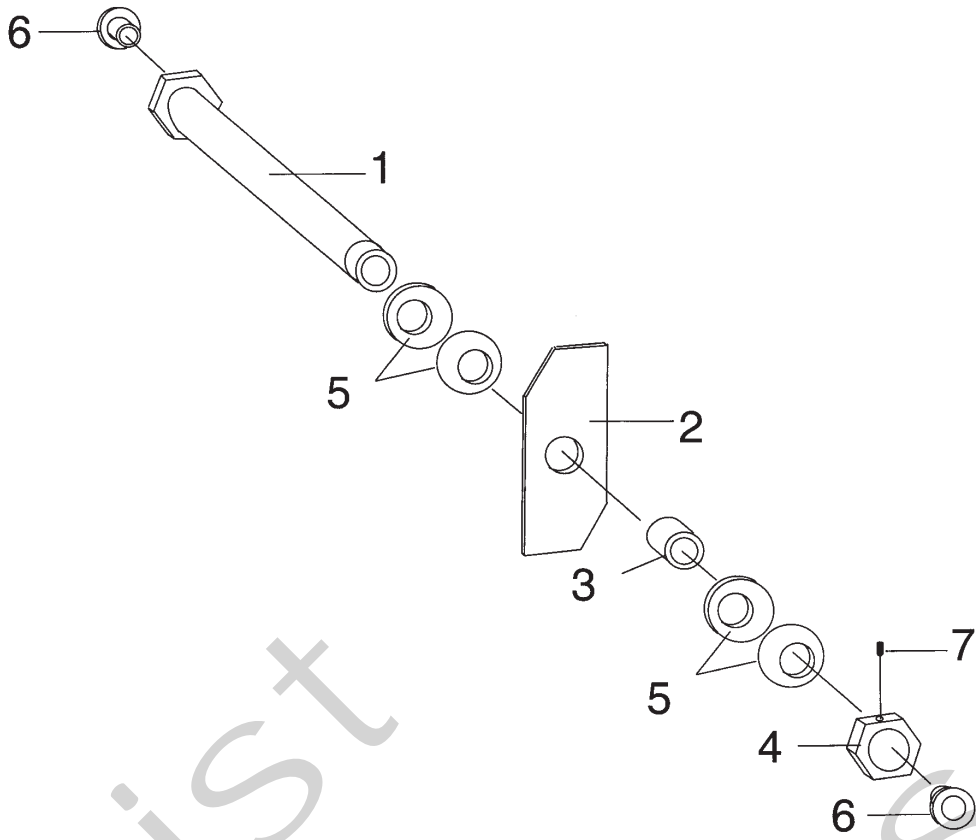
Aerator VB 40 Model Year 2009

- Use GLOBAL GARDEN PRODUCT Genuine Spare Parts specified in the parts list for repair and/or replacement.
- The contents described in the parts list may change due to improvement.
- The drawings of the spare parts are only indicative and might not represent the part in question exactly.
- The indications "right" - "left" - "front" - "rear" refer to the position of the operator when using the machine.
- When placing orders of parts for repair and/or replacement, make sure that the illustrated parts list is the one applying to the machine's year of manufacture, as shown on the identification plate attached to the machine.

COPYRIGHT by GLOBAL GARDEN PRODUCTS

All rights reserved. No part of this material may be reproduced or transmitted, in any form or by any means, electronic or mechanical, including photocopying, recording or by any information storage and retrieval system, without permission in writing from GLOBAL GARDEN PRODUCTS.





Utgåva Issue 2009- 12		Bildnr Picture No 2229		VERTIKALSKÄRARAXEL MOSSRIVARAXEL VB 40 PRO		AERATOR SHAFT FLAIL SHAFT VB 40 PRO		Sida Page 470	
Pos. Fig.	Antal/Quantity				Art nr Part No	Benämning	Description	Sats Kit	Anmärkning Notes
0	1				1126-9007-01	Vertikalskäraxel	Aerator shaft assy		Inkl. pos 1 - 7
1	1				1319-1655-01	• Rotoraxel	• Rotor shaft		
2	14				1319-1656-01	• Knivblad	• Tine		
3	13				1319-1851-01	• Hylsa	• Collar		
4	1				1319-1852-01	• Mutter	• Nut		
5	4				1319-1850-01	• Fjäderbricka	• Spring washer		
6	2				1319-1630-01	• Distans	• Spacer		
7	1				1319-1853-01	• Stoppskruv	• Set screw		
10		1			1319-1704-01	Mossrivaraxel kpl	Flail shaft assy		Inkl. pos 11 - 15
11		1			1319-1702-01	• Axel	• Shaft		
12		24			1319-1626-01	• Slaga	• Tine		
13		24			1319-1701-01	• Distans	• Collar		
14		24			9997-0825-16	• Skruv	• Screw		
15		24			9747-0831-02	• Mutter	• Lock nut		