

Genuine Spare Parts

www.stiga.com

Hydro-Gear Transmission Model Year 2002/03

includes:

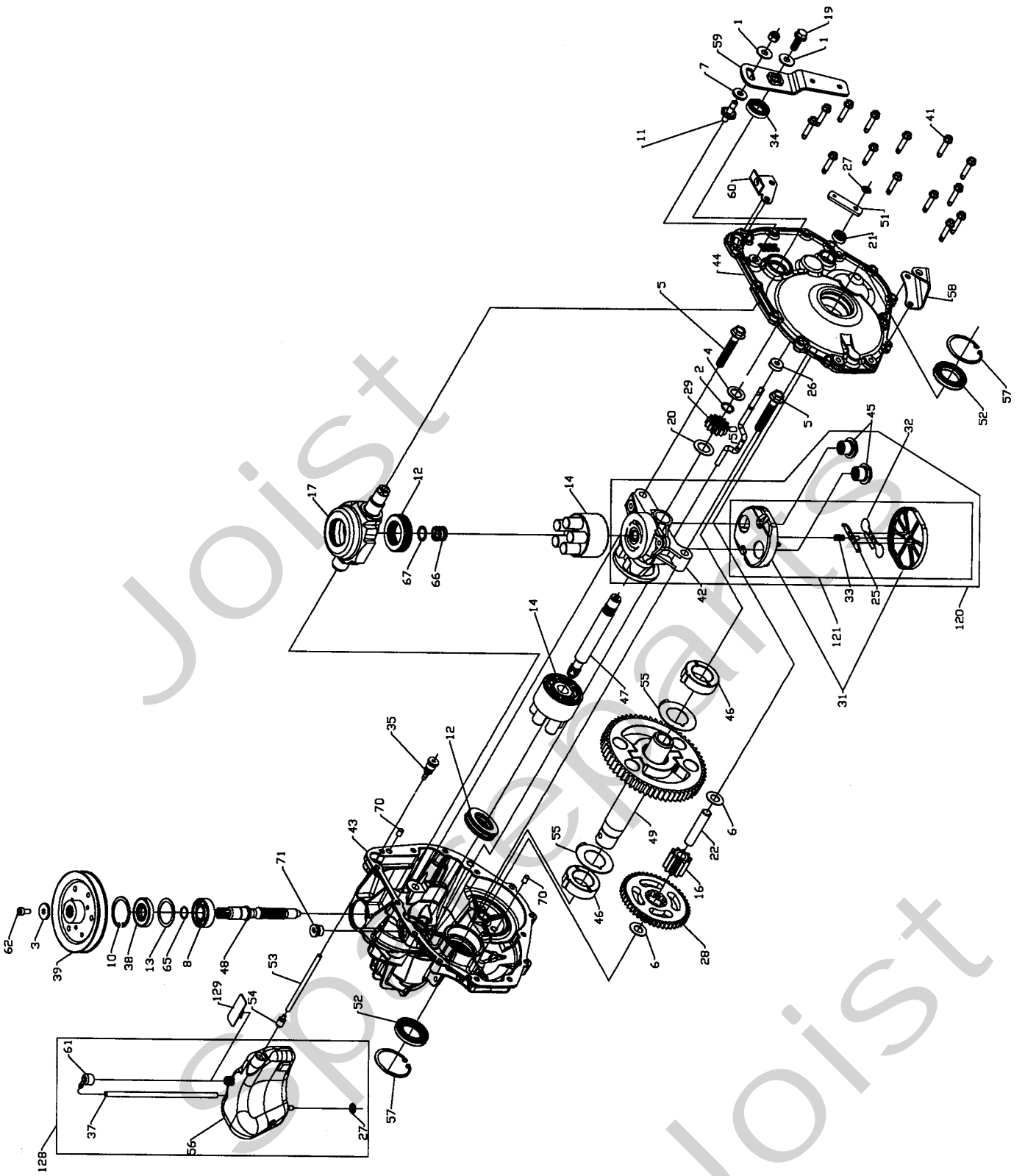
1812-1800-01 Hydro-Gear Transmission 314-0410

- Use GLOBAL GARDEN PRODUCT Genuine Spare Parts specified in the parts list for repair and/or replacement.
- The contents described in the parts list may change due to improvement.
- The drawings of the spare parts are only indicative and might not represent the part in question exactly.
- The indications "right" - "left" - "front" - "rear" refer to the position of the operator when using the machine.
- When placing orders of parts for repair and/or replacement, make sure that the illustrated parts list is the one applying to the machine's year of manufacture, as shown on the identification plate attached to the machine.

COPYRIGHT by GLOBAL GARDEN PRODUCTS

All rights reserved. No part of this material may be reproduced or transmitted, in any form or by any means, electronic or mechanical, including photocopying, recording or by any information storage and retrieval system, without permission in writing from GLOBAL GARDEN PRODUCTS.

STIGA®



Utgåva Issue		Bildnr Picture No		HYDRO- GEAR TRANSMISSION 314- 0410		HYDRO- GEAR TRANSMISSION 314- 0410		Sida Page	
2002- 49		1541						122	
Pos. Fig.	Antal/Quantity			Art nr Part No	Benämning	Description	Sats Kit	Anmärkning Notes	
	314- 0410								
X	1	2		1139-2011-01	Planbricka.....	Flat washer.....			
X	2	1		1139-2012-01	Låsring	Retaining ring			
X	3	1		1139-2013-01	Bricka	Washer.....			
X	4	1		1139-2014-01	Planbricka.....	Flat washer.....			
X	5	2		1139-2015-01	Skruv	Screw.....			
X	6	2		1139-2016-01	Bricka	Washer.....			
X	7	1		1139-2017-01	Friktionsbricka	Friction puck			
X	8	1		1139-2018-01	Kullager	Ball bearing.....			
X	10	1		1139-2019-01	Låsring	Retaining ring			
X	11	1		1139-2020-01	Pinnbult	Stud			
X	12	2		1139-2021-01	Trycklager	Thrust bearing.....			
X	13	1		1139-2023-01	Distans	Spacer			
X	14	2		1139-2063-01	Cylinderblock.....	Cylinder block			
X	16	1		1139-2024-01	Drev.....	Gear	10T		
X	17	1		1139-2025-01	Stänksplatta.....	Swash plate.....			
X	19	1		1139-2026-01	Bult	Bolt			
X	20	1		1139-2027-01	Bricka	Washer.....			
X	21	1		1139-2028-01	• Tätningsring	• Lip seal.....			
X	22	1		1139-2029-01	Axel	Pin			
X	25	1		1139-2030-01	• By-pass aktiverare.....	• By-pass actuator			
X	26	1		1139-2031-01	Magnet	Ring magnet			
X	27	2		1139-2032-01	• Låsring	• Retaining ring.....			
X	28	1		1139-2033-01	Drev.....	Gear	10T/48T		
X	29	1		1139-2034-01	Drev.....	Pinion gear.....	13T		
X	32	1		1139-2035-01	• Deflektor	• Deflector			
X	33	1		1139-2036-01	• By-pass fjäder	• By-pass spring			
X	34	1		1139-2037-01	• Tätningsring	• Lip seal.....			
X	35	1		1139-2038-01	Nippel	Fitting.....			
X	37	1		1139-2039-01	• Slang	• Hose.....			
X	38	1		1139-2040-01	• Tätningsring	• Lip seal.....			
X	39	1		1139-2041-01	Remskiva.....	Pulley			
X	41	14		1139-2042-01	Skruv	Screw.....			
X	43	1		1139-2065-01	Huvudhus kpl.....	Main housing assy			
X	44	1		1139-2066-01	Sidohus kpl.....	Side housing assy			
X	45	2		1139-2045-01	• Plugg	• Check plug			
X	46	2		1139-2047-01	Lager	Bearing.....			
X	47	1		1139-2048-01	Motoraxel	Motor shaft			
X	48	1		1139-2049-01	Ingående axel	Input shaft.....			
X	49	1		1139-2050-01	Rör- drev kpl.....	Tube- bull gear assy			
X	50	1		1139-2051-01	By-pass stång	By-pass actuator rod			
X	51	1		1139-2052-01	By-pass arm.....	By-pass arm			
X	52	2		1139-2053-01	• Tätningsring	• Lip seal.....			
X	53	1		1139-2054-01	Slang	Hose.....			
X	54	1		1139-2055-01	• Vikt	• Weight.....			
X	55	2		1139-2056-01	Bricka	Washer.....			
X	56	1		1139-2057-01	Expansionskärl	Expansion tank.....			
X	57	2		1139-2058-01	Låsring	Retaining ring			
X	58	1		1139-2059-01	Fäste	Bracket			
X	59	1		1139-2060-01	Reglagearm	Control arm.....			
X	60	1		1139-2061-01	Fäste	Bracket			
X	61	1		1139-2062-01	• Lock.....	• Cap.....			
X	62	1		1139-2046-01	Skruv	Screw.....			
X	65	1		1139-2071-01	Låsring	Retaining ring			
X	66	1		1139-2072-01	Tryckfjäder.....	Compression spring.....			
X	67	1		1139-2073-01	Bricka	Washer.....			
X	70	2		1139-2009-01	Sprint.....	Pin			
X	71	1		1139-2010-01	Plugg.....	Plug			
X	120	1		1139-2064-01	Centrumstycke- filter	Center section- filter		Pos 25,31- 33,42,45	
X	121	1		1139-2069-01	Filter kpl.....	Filter assy.....		Inkl. pos 25, 31- 33	
X	128	1		1139-2068-01	Expansionskärl kpl.....	Expansion tank kit.....		Inkl. pos 27,37,54,61	
X	129	1		1139-2044-01	Transportlock.....	Tank shipping cap			