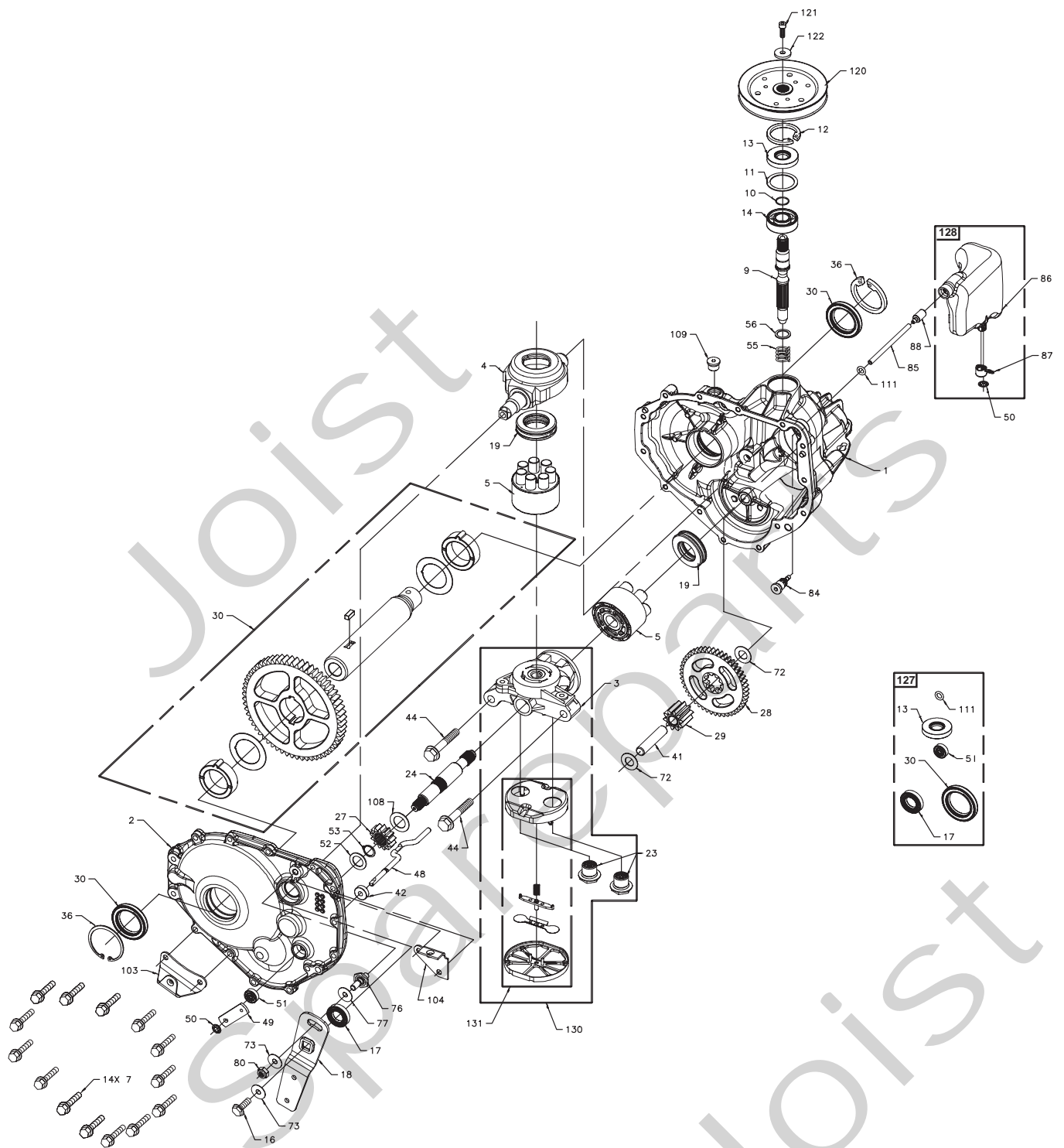


# Genuine Spare Parts

---



Spareparts  
Joist



Utgåva Issue 2007-14		Bildnr Picture No 2188		HYDRO- GEAR TRANSMISSION 317-0410		HYDRO- GEAR TRANSMISSION 317-0410		Sida Page 118	
Pos. Fig.	Antal/Quantity				Art nr Part No	Benämning	Description	Sats Kit	Anmärkning Notes
	317-0410								
	0	1			1812-2221-01	Transmission kpl .....	Transmission assy .....		
	1	1			1139-2065-01	Huvudhus kpl .....	Main housing assy .....		
	2	1			1139-2066-01	Sidohus kpl.....	Side housing assy .....		
	4	1			1139-2025-01	Stänkplatta.....	Swash plate.....		
	5	2			1139-2063-01	Cylinderblock.....	Cylinder block .....		
	7	14			1139-2042-01	Skruv .....	Screw.....		
	9	1			1139-2049-01	Ingående axel .....	Input shaft.....		
	10	1			1139-2071-01	Låsring .....	Retaining ring .....		
	11	1			1139-2023-01	Distans .....	Spacer.....		
	12	1			1139-2019-01	Låsring .....	Retaining ring .....		
	13	1			1139-2040-01	• Tätningring .....	• Lip seal.....		
	14	1			1139-2018-01	Kullager .....	Ball bearing .....		
	16	1			1139-2026-01	Bult .....	Bolt .....		
	17	1			1139-2037-01	• Tätningring .....	• Lip seal.....		
	18	1			1139-2060-01	Reglagearm .....	Control arm .....		
	19	2			1139-2021-01	Trycklager .....	Thrust bearing.....		
	23	2			1139-2045-01	• Plugg .....	• Check plug .....		
	24	1			1139-2048-01	Motoraxel .....	Motor shaft .....		
	27	1			1139-2034-01	Drev .....	Pinion gear.....		
	28	1			1139-2033-01	Drev .....	Gear .....		
	29	1			1139-2024-01	Drev .....	Gear .....		
X	30	1			1139-2080-01	Drev/axel kpl.....	Gear/axle tube kit .....		
X	36	2			1139-2077-01	Låsring .....	Retaining ring .....		
	41	1			1139-2029-01	Axel .....	Pin .....		
	42	1			1139-2031-01	Magnet .....	Ring magnet .....		
	44	2			1139-2015-01	Skruv .....	Screw.....		
	48	1			1139-2051-01	By-pass stång .....	By-pass actuator rod .....		
	49	1			1139-2052-01	By-pass arm.....	By-pass arm.....		
	50	2			1139-2032-01	• Låsring .....	• Retaining ring.....		
	51	1			1139-2028-01	• Tätningring .....	• Lip seal.....		
	52	1			1139-2014-01	Planbricka.....	Flat washer.....		
	53	1			1139-2012-01	Låsring .....	Retaining ring .....		
	55	1			1139-2072-01	Tryckfjäder.....	Compression spring.....		
	56	1			1139-2073-01	Bricka .....	Washer.....		
	72	2			1139-2016-01	Bricka .....	Washer.....		
	73	2			1139-2011-01	Planbricka.....	Flat washer.....		
	76	1			1139-2020-01	Pinnbult.....	Stud .....		
	77	1			1139-2017-01	Friktionsbricka .....	Friction puck .....		
	80	1			9794-5131-02	Mutter .....	Nut .....		
	84	1			1139-2038-01	Nippel .....	Fitting.....		
	85	1			1139-2054-01	Slang .....	Hose.....		
X	87	1			1139-2076-01	• Lock.....	• Cap.....		
	88	1			1139-2055-01	Vikt .....	Weight.....		
	103	1			1139-2059-01	Fäste .....	Bracket.....		
	104	1			1139-2061-01	Fäste .....	Bracket.....		
	108	1			1139-2027-01	Bricka .....	Washer.....		
	109	1			1139-2010-01	Plugg .....	Plug .....		
X	111	1			1139-2075-01	• O-ring.....	• O-ring .....		
	120	1			1139-2041-01	Remskiva.....	Pulley .....		
	121	1			1139-2046-01	Skruv .....	Screw.....		
	122	1			1139-2013-01	Bricka .....	Washer.....		
	127	1			1139-2067-01	Tätningringsats .....	Seal and o-ring kit .....		
X	128	1			1139-2079-01	Expansionskärl .....	Expansion tank.....		Inkl. pos 50, 86, 87
	130	1			1139-2064-01	Centrumstycke- filter .....	Center section- filter .....		Inkl. pos 3, 23, 131
X	131	1			1139-2078-01	• Filter .....	• Filter .....		